



DANSTED ELECTRICAL PTY LTD

licence no. 76516

ACN 165 101 628 ABN 45 528 610 763

WE HAVE OVER 36 YEARS EXPERIENCE OF OPERATING WITHIN THE AUSTRALIAN ELECTRICAL INDUSTRY

Based on Queensland Legislation

By 2022 1st January, smoke alarms in rental properties

- **Must be photoelectric alarms (ionization alarms will not be allowed)**
- **Must be interconnected, and connected by wire or radio frequency**
- **Must be 240v hardwired or non-removable 10 year lithium battery type**
- **Installed in every bedroom, outside bedroom and every level**
- **Our products are austrlian/new zealand standard compliant**

If your property is not compliant by the deadline, the property cannot be leased, existing tenancies cannot be renewed and the property can't be sold.

OUR SMOKE ALARM PARTNER

red SMOKE ALARMS

240V MAINS POWERED

The Smoke alarm is mains powered and must be installed by a licensed electrician. It also includes a replaceable lithium battery for back-up in the event of a power disruptions.

The 10 YEAR Lithium Battery is designed to last the maximum installed time of the smoke alarm.





DANSTED ELECTRICAL PTY LTD

licence no. 76516

ACN 165 101 628 ABN 45 528 610 763

QUOTATION

Date _____

Owner _____

Property Address _____

SMOKE ALARMS

Supply & install – **(Red. BRAND DETECTORS)**

5 x Photoelectric Interconnected Smoke Alarms **\$600.00**

1-Year Labour Free Warranty

TOTAL (including GST) \$600.00

~~**WERE \$169**~~

NOW ONLY

\$ 140 Inc. GST

**PER ALARM
FULLY INSTALLATION**

**2022 SMOKE ALARM
REPLACEMENT**

**1-year Free Service Includes
Free Takeover**

Price Match Promise ✓

Hardwired/ Wireless Product Warranty – 7/7 Years

SCHEDULING

Properties managed _____ are scheduled to be completed when the property next becomes vacant or when next due for a scheduled compliance inspection.



DANSTED ELECTRICAL PTY LTD

licence no. 76516

ACN 165 101 628 ABN 45 528 610 763

2020 UPGRADES PRICE GUIDE

For A SINGLE STOREY PROPERTY					
NUMBER OF BEDROOMS*	1	2	3	4	5
NUMBER OF ALARMAS*	2	3	4	5	6
PRICE AFTER DISCOUNT	\$280	\$420	\$560	\$700	\$840

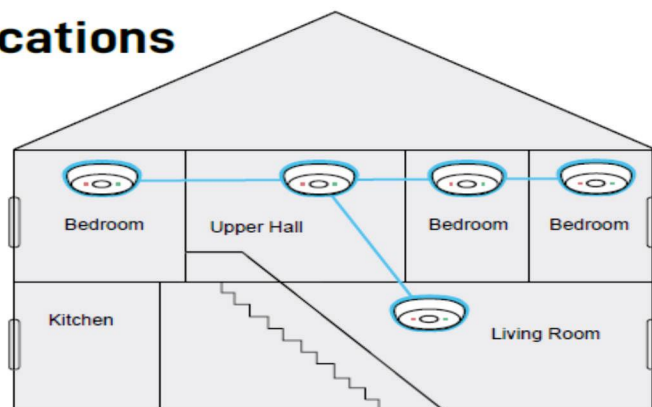
For A 2-STOREY PROPERTY					
NUMBER OF BEDROOMS*	1	2	3	4	5
NUMBER OF ALARMAS*	3	4	5	6	7
PRICE AFTER DISCOUNT	\$420	\$560	\$700	\$840	\$980

* Prices are subjects to access to 240 volt hardwired point upgrade.

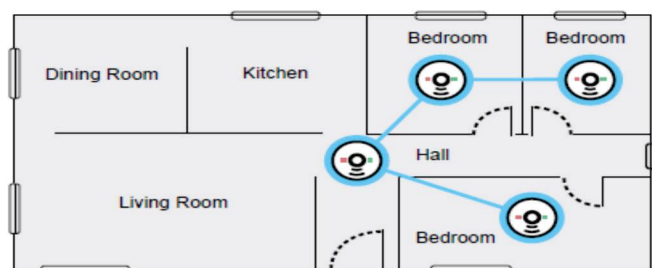
* Inspection of some types of premisis may be required before a fixed price can be submitted.

* Since a single level property must have 1 smoke alarm outside of bedrooms, additional alarms are required for multiple levels. Extra hardwired alarms may be needed outside of bedrooms and/or in common areas or in studies, these will lead to extra cost.

Locations



Two level home



Single level home



DANSTED ELECTRICAL PTY LTD

licence no. 76516

ACN 165 101 628 ABN 45 528 610 763

PAYMENT TERMS

Prior to completion

- An invoice will be issued 2 weeks prior to the work being scheduled and 50% deposit will be due for payment within 7 days.
- Another 50% balance will be due for payment within 7 days from the day that all replacing job done.

ACCEPTANCE

Name _____

Signature _____ Date _____

Please return the completed form to agent's email as soon as possible. This quotation is valid for 30 days.



Smoke Alarm 2022 Legislation

A Guide

for Property Managers, Landlords,
and Electricians.



EXISTING DWELLINGS FOR OWNERS / OCCUPIERS

► From 1 January 2017

When replacing smoke alarms, they must be of a *photoelectric* type which complies with Australian Standard (AS) 3786-2014.

Existing smoke alarms manufactured more than ten years ago must be replaced. (Note: Smoke alarms should have the date of manufacture stamped on them.)

Smoke alarms that do not operate when tested must be replaced immediately.

Existing *hardwired* smoke alarms that need replacement must be replaced with a hardwired smoke alarm.

► From 1 January 2027

Smoke alarms in all *dwellings* must:

- i. be photoelectric (AS 3786-2014); and
- ii. not also contain an ionisation sensor; and
- iii. be less than 10 years old; and
- iv. operate when tested; and
- v. be interconnected with every other smoke alarm in the *dwelling* so all activate together.

Smoke alarms must be installed on each *storey*:

- i. in each bedroom; and
- ii. in hallways which connect bedrooms and the rest of the *dwelling*; or
- iii. if there is no hallway, between the bedrooms and other parts of the *storey*; and
- iv. if there are no bedrooms on a *storey* at least one smoke alarm must be installed in the most likely path of travel to exit the *dwelling*.

Smoke alarms must be either hardwired or powered by a non-removable 10 year battery, or a combination of both may be allowed.

DWELLINGS BEING SOLD, LEASED OR AN EXISTING LEASE IS RENEWED

► From 1 January 2017

Requirements as for existing *dwellings*.

Existing landlord's and tenant's obligations regarding the installation and testing of smoke alarms continue.

Property sellers must continue to lodge a Form 24 with the Queensland Land Registry Office stating the requirements of the smoke alarm legislation have been met.

► From 1 January 2022

Smoke alarms in all *dwellings* must:

- i. be photoelectric (AS 3786-2014); and
- ii. not also contain an ionisation sensor; and
- iii. be less than 10 years old; and
- iv. operate when tested; and
- v. be *interconnected* with every other smoke alarm in the *dwelling* so all activate together.

Smoke alarms must be installed on each *storey*:

- i. in each bedroom; and
- ii. in hallways which connect bedrooms and the rest of the *dwelling*; or
- iii. if there is no hallway, between the bedrooms and other parts of the *storey*; and
- iv. if there are no bedrooms on a *storey* at least one smoke alarm must be installed in the most likely path of travel to exit the *dwelling*.

Smoke alarms must be hardwired or powered by a non-removable 10 year battery, or a combination of both may be allowed.



SMOKE ALARMS

Data Sheet



R10RF

Smoke Alarm, Photoelectric, Wireless Interconnect, 3V Sealed Battery

Key Information

Product brand	Red Smoke Alarms
Product or component	Smoke Detector
Device application	Early detection of smouldering fires and open fires
Electronic sensor type	Photo-electric sensor
Colour	White
Quantity per set	Set of 1
Type of packing	Carton

Complementary

Supply	3V DC Sealed Battery
Battery Type	Lithium Battery
Battery Life	10 Year
Operating Current	< 100mA at 3V
Standby Power	< 0.04 mW
Detection Type	Smoke
Function Available	Hush Function; Self-test of smoke detection;Local alarm
Control Type	Button for test/ hush function
Transmission Frequency	433.92 MHz
Number of Devices	Up to 20 pieces
Operating Distance	30m indoor use line of sight ;100m in free field
Pairing delay range	2 min maximum
Response time	Approx. 8s
Noise level	85 dB at 3m minimum
Time delay range	10 min for hush;10 hr for do not disturb
Local Signal	Sound : Alarm;Sound : Signal; Visual : 1 LED (red for warning and low battery)
Type of Installation	Indoor
Device Mounting	Surface
Mounting Support	Wall-mount ; Ceiling
Fixing Mode	By screws
Diameter	140 mm
Height	39 mm

Environment

Ambient Air Temperature for Operation	0...45°C
Relative Humidity	5...95%
Standards	AS 3786 : 2014 / amdt 2:2018

The information provided in this documentation contains general descriptions and/or technical characteristics of the performance of the products contained herein. This documentation is not intended as a substitute for and is not to be used for determining suitability of reliability of these products for specific user applications. It is the duty of any such user or integrator to perform the appropriate and complete risk analysis, evaluation and testing of the products with respect to the relevant specific application or use thereof. Neither Red Smoke Alarms PTY. LTD nor any of its affiliates or subsidiaries shall be responsible or liable for misuse of the information contained herein.



SMOKE ALARMS

Data Sheet



R240RC

Smoke Alarm, Photoelectric, Surface Mount, 230V Rechargeable Battery Power

Key Information

Product brand
Product or component
Device application

Red Smoke Alarms
Smoke Detector
Early detection of smouldering fires and open fires
Photo-electric sensor
White (RAL 9003)
Set of 1
Carton

Electronic sensor type
Colour
Quantity per set
Type of packing

Complementary

Supply	Mains
Rated Supply Voltage	220...240 V AC
Backup Type	Battery
Battery Life	10 Year
Output Voltage Limits	Interconnection : 6.5...20V ; Low battery at 6.9...7.5V
Detection Type	Smoke
Function Available	Hush Function;Local alarm;Self-test of smoke detection
Control Type	Button for test/ hush function
Number of Devices	Up to 40 pieces
Response Time	Approx. 8s
Noise Level	85 dB at 3m minimum
Time delay range	10 min for hush;10 hr for do not disturb
Local Signal	Sound : Alarm Sound : Signal Visual : 1 LED (red) for warning and low battery Visual : 1 LED (green) for ON status
Type of Installation	Indoor
Device Mounting	Surface
Mounting Support	Wall-mount ;Ceiling
Fixing Mode	By screws
Diameter	140 mm
Height	55 mm

Environment

Ambient Air Temperature for Operation	0...45°C
Relative Humidity	5...95%
Standards	AS 3786 : 2014 / amdt 2:2018

The information provided in this documentation contains general descriptions and/or technical characteristics of the performance of the products contained herein. This documentation is not intended as a substitute for and is not to be used for determining suitability of reliability of these products for specific user applications. It is the duty of any such user or integrator to perform the appropriate and complete risk analysis, evaluation and testing of the products with respect to the relevant specific application or use thereof. Neither Red Smoke Alarms PTY. LTD nor any of its affiliates or subsidiaries shall be responsible or liable for misuse of the information contained herein.

red SMOKE ALARMS

INSTRUCTIONS



When the smoke alarms sound

If there is a fire, immediately evacuate the premises and telephone 000.



Locate the source smoke alarm(s)

If the FIRE indicator is lighting and there is no obvious fire, the user may trace the source alarm using the Locate button.

1. Press the LOCATE button 1 time. The red LED on the Controller will change from flashing to steady glowing.
2. After 3 seconds, all other interconnected smoke alarms will stop alarming and flashing except the source smoke alarm.

Note: The Controller will turn off the Locate Mode after 2 minutes. If the user has not yet traced the source alarm, repeat from No 1.



Silence the source alarms

If you are satisfied there is no fire but the smoke alarm is still continuing to alarm, you may now silence the alarm.

- 1 Press the TEST/SILENCE button 1 time on the Controller. The red LED on the Controller will change from flashing to steady glowing.
2. After 5 seconds, the source smoke alarm will enter silence mode. All other interconnected smoke alarms will then stop sounding. The silence feature has been completed.



DANSTED ELECTRICAL PTY LTD

licence no. 76516

ACN 165 101 628 ABN 45 528 610 763

SERVICE QUOTATION

Date From _____ to _____

Owner _____

Property Address _____

SMOKE ALARMS Servicing Package

- ✓ Same day servicing
- ✓ FREE takeover service
- ✓ FREE 2022 Upgrade quote
- ✓ FREE replacement *
- ✓ Free Safety Switch Check
- ✓ Compliance Inspections per year
- ✓ Photographic evidence on reports
- ✓ 240 volt alarms / 10-year lithium battery wireless alarms

*Free entire replacement for wireless ones, free battery replacement for hardwired smoke alarms. To meet the new smoke alarm regulation, battery inside new wireless smoke alarm is not removable.

SMOKE ALARMS Servicing Package

- | | |
|--|----------------------------|
| <input type="checkbox"/> 1-Year Smoke Alarm Servicing - Silver | \$121.00 pa Inc.GST |
| <input type="checkbox"/> 2-Year Smoke Alarm Servicing - Gold | \$110.00 pa Inc.GST |
| <input type="checkbox"/> 3-Year Smoke Alarm Servicing - Platinum | \$99.00 pa Inc.GST |